

Name:

Group 1

Result:

1. Sketch the graphs of the following functions:

(6 points)

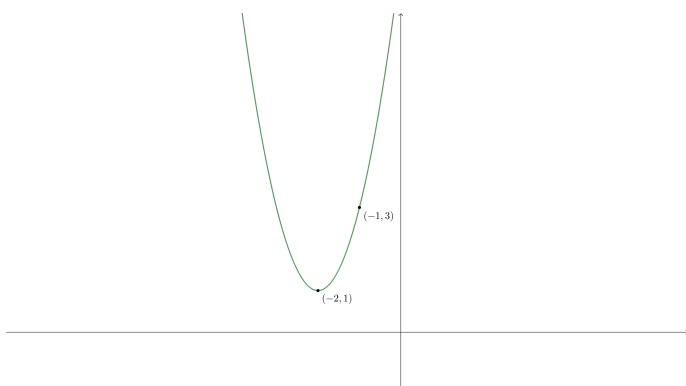
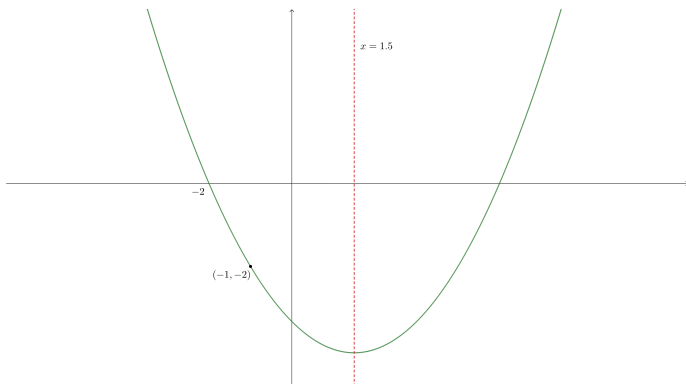
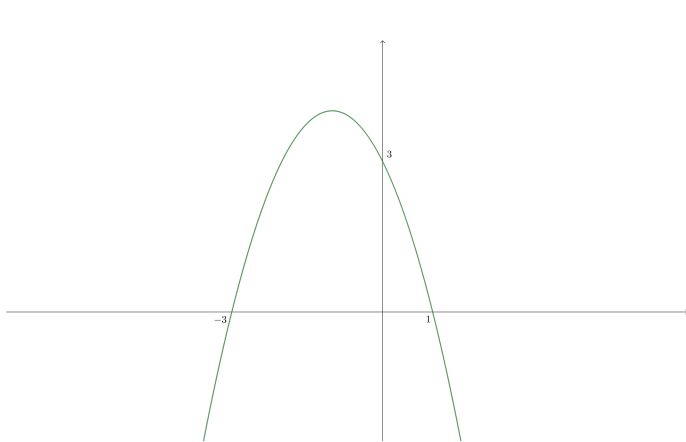
$$y = \frac{1}{8}(x - 4)^2 + 1$$

$$y = x^2 - 2x - 8$$

$$y = \frac{1}{3}(x - 1)(x + 6)$$

2. Find the equations of the quadratic functions given their graphs:

(6 points)



3. Solve the following equations:

(4 points)

a) $(x^2 + 2)^2 - 7(x^2 + 2) + 6 = 0$

b) $x - 6\sqrt{x - 2} + 6 = 0$