

Name:

Group 2

Result:

1. Sketch the graphs of the following functions:

*(6 points)*

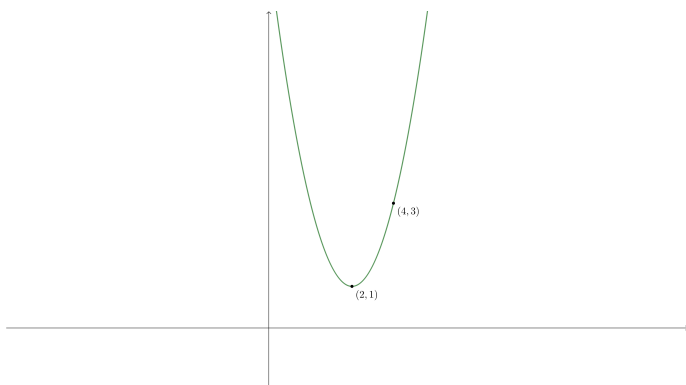
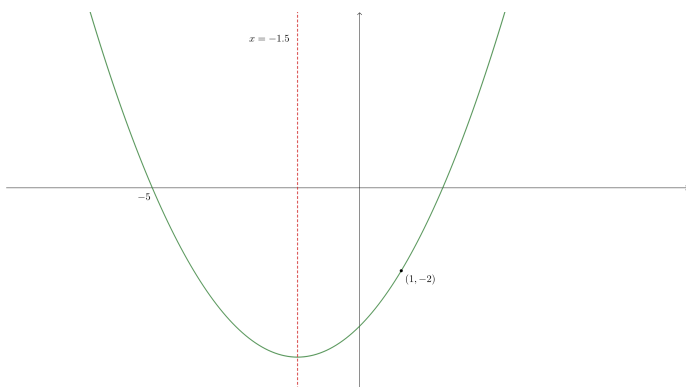
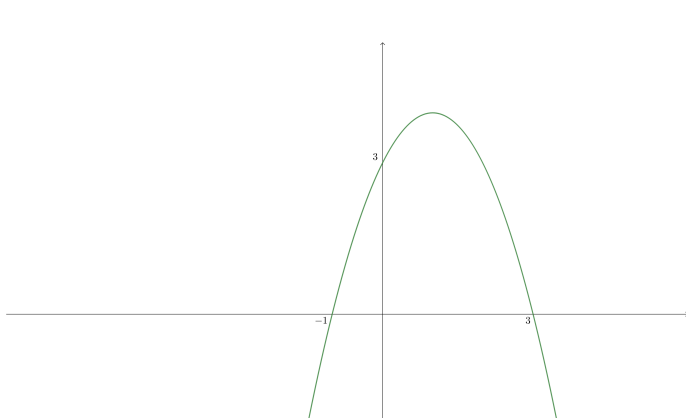
$$y = \frac{1}{8}(x + 4)^2 + 1$$

$$y = x^2 + 2x - 8$$

$$y = \frac{1}{3}(x - 2)(x + 3)$$

2. Find the equations of the quadratic functions given their graphs:

(6 points)



**3.** Solve the following equations:

*(4 points)*

a)  $(x^2 + 3)^2 - 3(x^2 + 3) - 4 = 0$

b)  $x - 7\sqrt{x-1} + 5 = 0$